

ILab 300 Plus

Clinical Chemistry

Critical Care
Haemostasis
Information Systems



PRACTICALITY

EASE OF USE

CONTINUOUS LOADING

OPERATOR SAFETY

ECONOMY

TECHNOLOGY

DEDICATED KITS

QUALITY

A New Plus for Laboratory efficiency

A New

SAMPLE RACKS

Cups and different size tubes can be easily accommodated.

64 routine samples can be loaded simultaneously; 14 stat samples, loaded in a dedicated rack, can be run with no interruption of the routine workflow.



Practicality



REAGENT RACKS

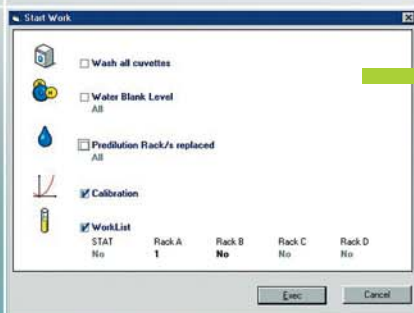
Up to 35 reagents can be loaded simultaneously; eight sets of racks (35 positions each) can be reprogrammed. Refrigerated and ambient storage ensure optimum on board reagent stability.

Technology

The sampling arm is equipped with capacitive level sensing and accesses sample and reagent positions, the ISE module and the reaction cuvettes.



Plus for Laboratory efficiency



Ease of Use

The software managing the system has been designed by users/ for users. A single screen system monitor allows the user to easily keep under control the status of samples, reagents and analysis; a mouse click only is required to start analysis.



Continuous Loading

The sample and reagent front loading feature using dedicated racks allows continuous loading without compromising routine workflow, thus maximizing system throughput.



Economy

The ILab 300 Plus washes only the cuvettes that have been used with a requirement for only 0,9 L/h of water and detergent. The analyzer does not need to be plumbed into a deionizer system. The semi disposable cuvettes can be individually replaced by the user.

Operator Safety

The system is designed to allow the user to load and unload samples and reagents in complete safety. Those operations can be performed with no risk to the user of contact with any moving parts.

Plus for Laboratory efficiency



Dedicated Kits

A wide range of dedicated kits have been developed and validated for use with ILab 300 Plus; this helps to guarantee a high level analytical performance. They have been specifically designed so as to be placed directly on board and to minimize the reagent dead volume. Their size has been defined in order to meet the needs of the routine chemistry laboratory to which ILab 300 Plus system is dedicated.



Quality



IL applies state of art quality system procedures during design and manufacturing. This assures the compliance of the products with the regulatory requirements applicable to in vitro diagnostics medical devices.

Methods

The system holds over 150 user definable applications. IL offers a comprehensive menu that includes reagents, calibrators and controls for a wide range of validated applications covering routine chemistry, specific proteins, rheumatology... Available dedicated kits are listed in the tables below.

ROUTINE CHEMISTRY

Test	Method	Cat. No.	Kit Configuration	Tests/Kit	Calibrators	Formulation
Acid Phosphatase (Total & Non Prostatic)	α - naphthylphosphate	00018482300	5x6 (NP) + 5x6 (T) ml	200	ReferrIL G	Liquid
Albumin	Bromocresol Green	00018481800	8x10 mL	250	ReferrIL G	Liquid
Alkaline Phosphatase	IFCC	00018480600	16x6.5 mL	400	Factor	Liquid
ALT/GPT	IFCC	00018480700	6x26 + 6x6.5 mL	696	Factor	Dry
ALT/GPT	IFCC	00018257440	8x48 + 4x24 mL	1714	Factor	Liquid
Amylase	CNP-Maltotrioxide	00018481500	12x8 mL	320	Factor	Liquid
AST/GOT	IFCC	00018480800	6x26 + 6x6.5 mL	696	Factor	Dry
AST/GOT	IFCC	00018257540	8x48 + 4x24 mL	1714	Factor	Liquid
Calcium	o-cresolphthalein	00018482800	6x30 + 6x30 mL	600	ReferrIL G	Liquid
Cholesterol	Chol. Esterase Chol. Oxidase / Trinder	00018480200	6x35 mL	656	ReferrIL G	Liquid
Cholinesterase	BTC	00018482000	6x10 + 4x30 mL	363	Factor	Dry
CK	IFCC	00018482100	8x10 + 4x5 mL	320	Factor	Liquid
CK-MB	Immuno-inhibition	00018482200	6x10 + 6x2.5 mL	250	Factor	Liquid
Creatinine	Jaffè	00018480900	6x16 + 6x16 mL	640	ReferrIL G	Liquid
Direct Bilirubin	Modified Jendrassik-Grof	00018481100	4x33 + 8x10 mL	471	ReferrIL G	Liquid
γ -GT	IFCC	00018480300	4x17 mL	226	Factor	Dry
γ -GT	Szasz / IFCC	00018257640	6x40 + 6x10 mL	1000	Factor	Liquid
Glucose	Glucose Oxidase/Trinder	00018480000	6x35 mL	700	ReferrIL G	Liquid
HDL Cholesterol	Direct Homogeneous	00018481400	4x30 + 4x10 mL	400	ReferrIL HDL	Liquid
LDL Cholesterol	Direct Homogeneous	00018482700	6x9 + 6x3 mL	180	ReferrIL LDL	Liquid
Iron	Ferene	00018481700	4x30 + 4x2.5 mL	400	ReferrIL G	Liquid
Magnesium	Xilidyl Blue	00018481600	8x10 mL	228	ReferrIL G	Liquid
Phosphorus	Phosphomolybdate Complex	00018481900	6x10 + 6x10 mL	400	ReferrIL G	Liquid
Total Bilirubin	Modified Jendrassik-Grof	00018481000	4x33 + 8x10 mL	440	ReferrIL G	Liquid
Total Protein	Biuret	00018481300	6x30 mL	600	ReferrIL G	Liquid
Triglycerides	GPO/Trinder	00018480500	6x30 mL	600	ReferrIL G	Liquid
Urea	Urease/GLDH	00018480400	8x26 + 8x6.5 mL	866	ReferrIL G	Liquid
Uric Acid	Uricase/Trinder	00018480100	6x33 mL	660	ReferrIL G	Dry

IMMUNOTURBIDIMETRY

Test	Method	Cat. No.	Kit Configuration	Tests/Kit	Calibrators	Formulation
Quantex CRP	Latex-immunoturbidimetry	T3000-2321	4x13 + 4x6.5 mL	162	CRP Standard	Liquid
Quantex ASO	Latex-immunoturbidimetry	T3000-2319	4x13 + 4x2 mL	160	ASO Standard	Liquid
Quantex RF	Latex-immunoturbidimetry	T3000-2320	4x13 + 4x2 mL	160	RF Standard	Liquid
Quantex Ferritin	Latex-immunoturbidimetry	T3000-2328	8x4 + 2x4 mL	129	Ferritin standard	Liquid
Quantex IgA	Immunturbidimetric	T3000-2322	1x30 + 4x6 mL	96	Protein standard	Liquid
Quantex IgG	Immunturbidimetric	T3000-2323	1x30 + 4x6 mL	96	Protein standard	Liquid
Quantex IgM	Immunturbidimetric	T3000-2324	1x30 + 4x5 mL	100	Protein standard	Liquid
Quantex Transferrin	Immunturbidimetric	T3000-2325	2x21 + 2x2 mL	133	Protein standard	Liquid

CALIBRATORS

	Description	Cat. No.	Kit Configuration	Parameters	Composition
Routine Chemistry	ReferrIL G	00018257000	10x3 mL	Substrates and Electrolytes (no ISE)	Lyoph. bovine based
	ReferrIL HDL Cholesterol	00018255800	2x3 mL	HDL Chol	Lyoph. human based
	ReferrIL LDL Cholesterol	00018256100	2x1 mL	LDL Chol	Lyoph. human based
	ISE CALIBRATOR A	00018469700	10x100 mL	Na, K, Cl	Acqueous Standard
	ISE CALIBRATOR B	00018469800	4x20 mL	Na, K, Cl	Acqueous Standard
Immunochemistry	Quantex RF Plus standard	T3000-2252	6x1 mL	RF	Liquid human based
	Quantex Ferritin standard multipoint	T3000-2223	5x1 mL	Ferritin	Liquid human based
	Quantex CRP Plus standard	T3000-2093	6x1 mL	CRP	Liquid human based
	Quantex ASO Plus standard	T3000-2312	6x1 mL	ASO	Liquid human based
	Quantex Protein standard multipoint	T3000-2128	5x1 mL	IgA, IgG, IgM, alpha1-AGP, Transferrin	Liquid human based

CONTROLS

	Description	Cat. No.	Kit Configuration	Parameters	Composition
Routine Chemistry	SeraChem Control Level 1	00018162412	12x5 mL	Routine Chemistry	Lyoph. human based
	SeraChem Control Level 2	00018162512	12x5 mL	Routine Chemistry	Lyoph. human based
Immunochemistry	Quantex ASO-CRP-RF control I	T3000-2069	6x1 mL	ASO, CRP, RF	Liquid human based
	Quantex ASO-CRP-RF control II	T3000-2070	3x1 mL	ASO, CRP, RF	Liquid human based
	Quantex Ferritin/Myoglobin/IgE control I-II	T3000-2222	2x3 mL	Ferritin	Liquid human based
	Quantex Protein control I-II	T3000-2122	3x1 + 3x1 mL	IgA, IgG, IgM, alpha1-AGP, Transferrin	Liquid human based

The ILab Test Menu also includes: Glucose Hexokinase, Lipase, LD-LDH, Soluble Transferrin, Immunoglobulin E, Myoglobin, Complement 3, Complement 4, Microalbumin, Haptoglobin, HbA1c. For detailed information, please, refer to ILab 300 Plus Application Manual P/N 00018461800.

Technical Specifications

Tests on board	Up to 35 + 3 ISE
Test Menu	Open System, over 150 Photometric + ISE
Throughput	Up to 180 photometric tests/hour + up to 160 ISE tests/hour
Measuring Methods	End Point, Fixed Time, Kinetic
Sample Loading	Rack : 64 routine (continuous loading), + 14 STAT positions, + 14 Cal&QC positions
Sample containers	Cup, micro cup, Primary tubes (diam. 10 -16, height 50 - 100 mm)
Sample volume	From 3 to 99 μ L (step 1 μ L)
Reagent dispensing system	Direct System, 1 to 3 reagents/test
Reagents on Board	35 (+ 1 ISE); 20 refrigerated
Reagent Volume	From 25 to 400 μ L (step 1 μ L)
Reaction cuvette	60 semi disposable optical cuvettes, system laundry
Reaction cuvette volume	min. 290 μ L max. 600 μ L
Deionized water and diluent usage	About 4 mL/test
Wavelengths	8, range 340 to 620 nm.
Host Interface	Bi-directional RS-232; host query or batch mode
Installation Requirements	
Power	100-230 VAC, 47-63 Hz, 300 W
Temperature / Relative Humidity	18-30 °C, 20-85 % RH non condensing
Dimensions and weight	100 cm width, 65 cm depth, 42 cm height, 65 Kg
PC / Printer	Pentium PC / 80 column impact printer, Laser printer
Options	
	Sample Bar-code reader, ISE module (Na, K, Cl)

Worldwide Locations

**Instrumentation Laboratory
Corporate Headquarters**
Barcelona, Spain
Tel. +34-93-4010101

US, Canada, Latin America Headquarters

Lexington, MA, U.S.A.
Tel. +1-781-861-0710

Mexico
Col. Granada
Tel. +52-55-5262-1760

USA
Lexington, MA
Tel. +1-781-861-0710

Pacific Headquarters

Minato-ku, Tokyo, Japan
Tel. +81-3-3437-6350

Hong Kong
Hong Kong
Tel. +852-27927773

Japan
Minato-ku, Tokyo
Tel. +81-3-3437-6350

Europe, Middle East, Africa Headquarters

Milano, Italy
Tel. +39-02-25221

Austria
Wien
Tel. +43-1-2565800-0

Belgium
Zaventem
Tel. +32-2-7252052

Czech
Praha
Tel. +420-2-7816047

France
Paris
Tel. +33-1-53338600

Germany
Kirchheim bei München
Tel. +49-89-909070

Hungary
Budapest
Tel. +36-1-4392910 or 11

Italy
Milano
Tel. +39-02-25221

Lithuania
Kaunas
Tel. +370-37-313157

Poland
Warszawa
Tel. +48-22-3361800

Russia
Moscow
Tel. +7 495 9823723

The Netherlands
Breda
Tel. +31-76-5480100

United Kingdom
Warrington, Cheshire
Tel. +44-1925-81-0141

Instrumentation Laboratory on the Internet: www.ilwu.com

This Brochure is used throughout the world.
Applications / tests listed may not yet be approved by the regulatory authorities in your country.
Please contact the appropriate office above for specific information regarding availability in your country.
IL product specifications are subject to modification to assure the highest quality performance.
Some of the IL sites may still be in the process of completing ISO.

© Instrumentation Laboratory 2005